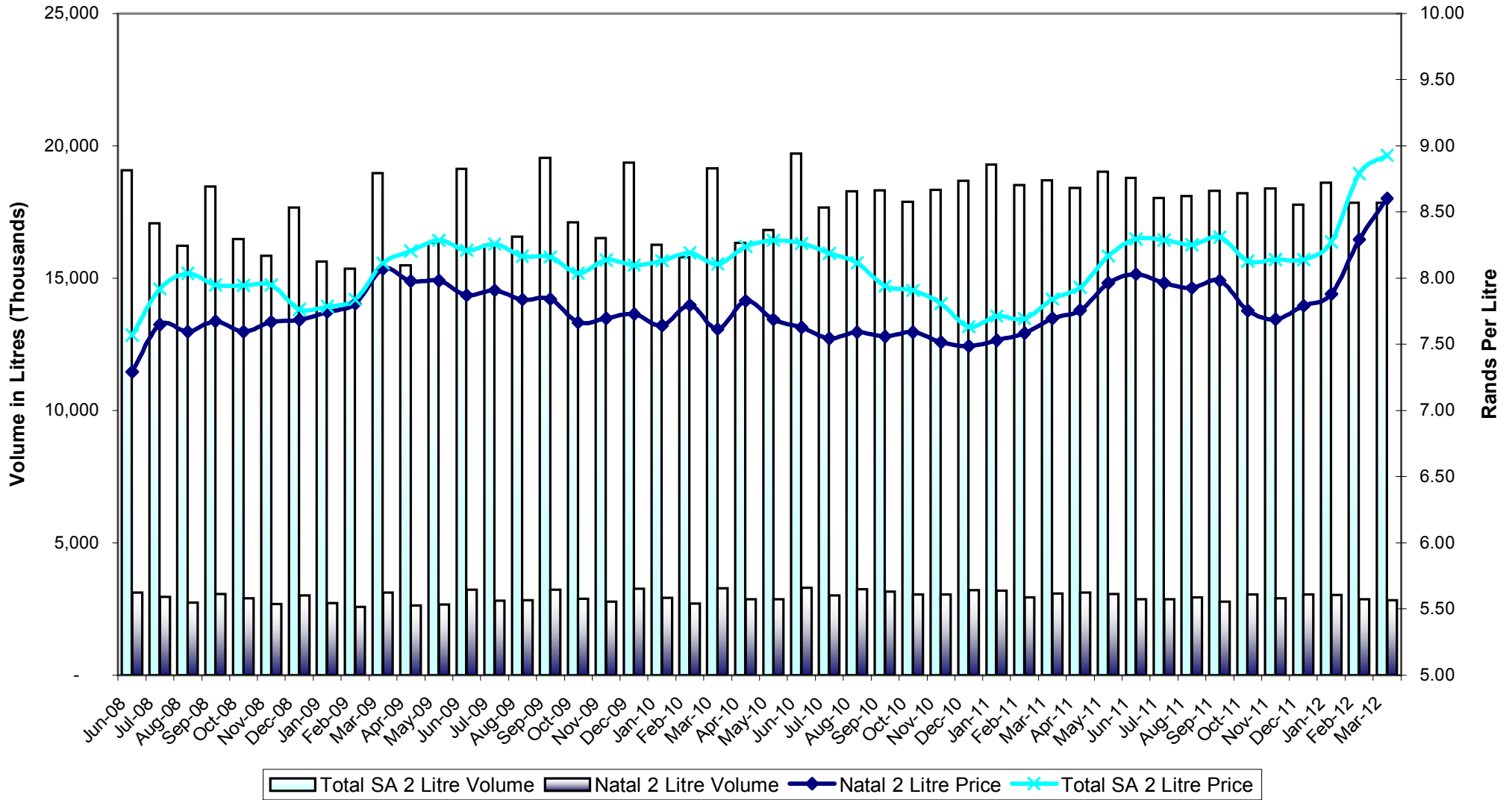
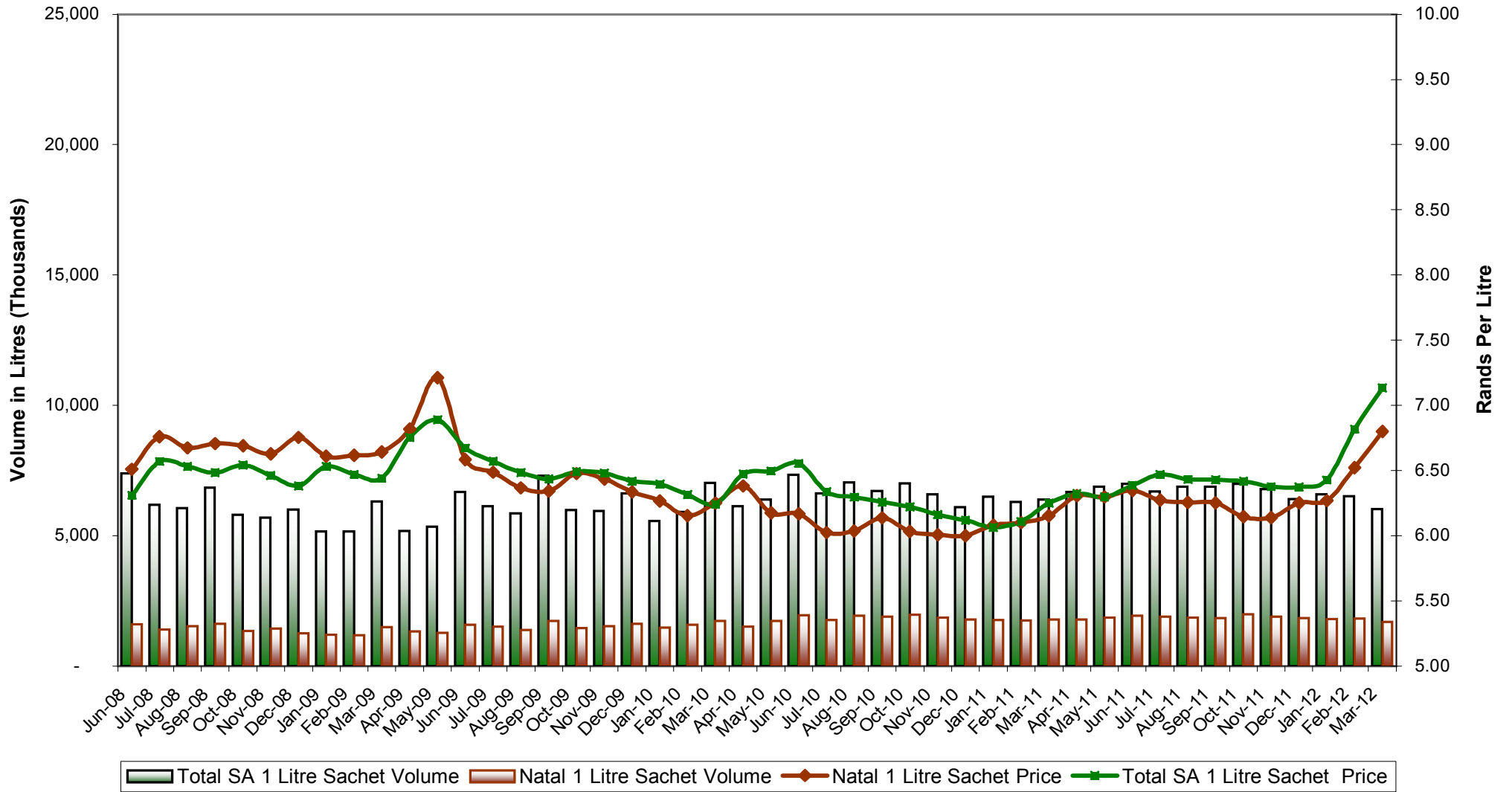


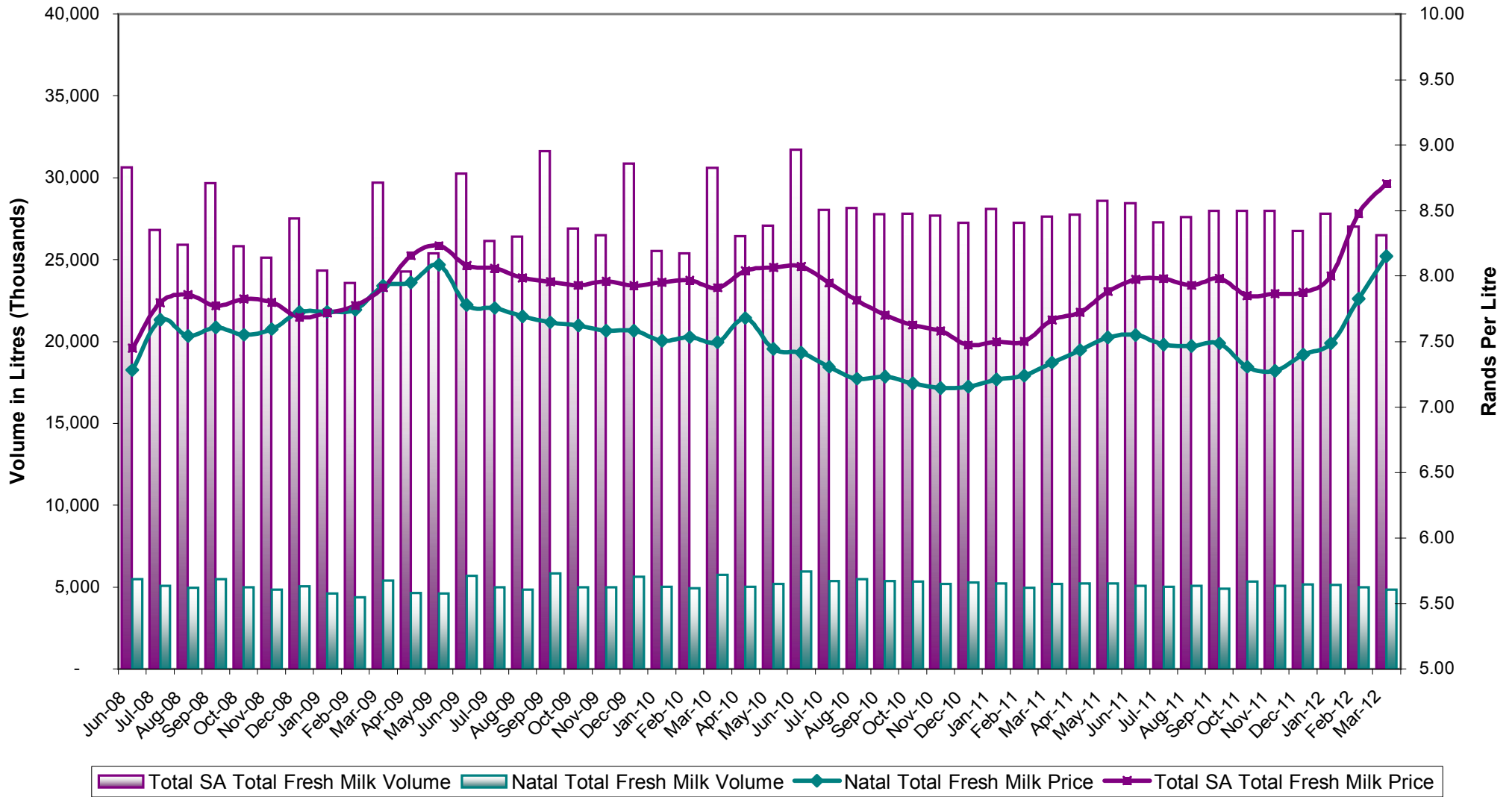
### Fresh Milk Two Litre Packaging - Volume and Weighted by Volume Price



### Fresh Milk One Litre Sachet - Volume and Weighted by Volume Price



## Fresh Milk All Packaging - Volume and Weighted by Volume Price



### Fresh Milk One Litre All Packaging excluding Sachets - Volume and Weighted by Volume Price

