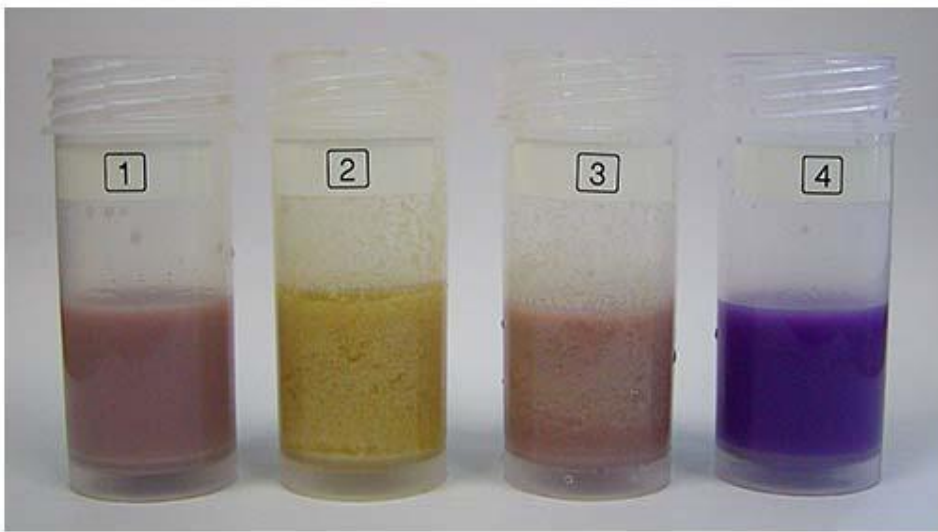


MIDLANDS MILK

(Pty) Ltd

Chemical Analysis - Alizarol Test



RESULTS

1. Light purple (fresh milk) 2. Yellow (sour milk) 3. Brownish-yellow (slightly acid) 4. Violet (alkaline)

Table - Criteria for Alizarol Test

Milk	pH	%TA	Flocculation	Colour
Fresh milk (1)	6,66 - 6,75	0,14 - 0,16	None	Light Purple
Slightly Sour	6,30 - 6,50	0,17	Possible small flakes	Brownish-pink
Sour (3)	6,00 - 6,20	0,18 - 0,19	Small flakes	Brownish-yellow
Very sour (2)	<6,00	0,20+	Big/Large flakes	Yellow
Sweet Coagulation	6,60 - 6,75	0,14 - 0,16	Big/Large flakes	Light purple
Mastitis	6,80+	NA	Small flakes	Violet
Added alkaline (4)	6,80+	NA	None	Violet